



CONSULTANTS IN ENGINEERING,
ENVIRONMENTAL SCIENCE & PLANNING

CORK | DUBLIN | CARLOW

www.fehilytimoney.ie

Shancloon Wind Farm

ABP Pre-Planning Meeting – Opinion on Flex

ABP Refs: ABP-321507-24 & ABP-321495-24

12th March 2025

RWE

Outline of Presentation

- Introduction to Project Team
- The Proposal
- Relevant Legislation and Planning Policy Context
- Technical Considerations
- Questions for the Board
- Next Steps



CONSULTANTS IN ENGINEERING,
ENVIRONMENTAL SCIENCE & PLANNING

www.fehilytimoney.ie



INTRODUCTION TO PROJECT TEAM

CONSULTANTS IN ENGINEERING, ENVIRONMENTAL SCIENCE & PLANNING

www.fehilytimoney.ie



The Applicant



Involved in the Energy Sector for 120 years. RWE's global portfolio is based on offshore and onshore wind, solar, hydropower, hydrogen, batteries, biomass and gas. Focusing on wind energy, solar power and battery storage in Ireland. RWE's ambition is to be carbon neutral by 2040.



CONSULTANTS IN ENGINEERING,
ENVIRONMENTAL SCIENCE & PLANNING

www.fehilytimoney.ie

The Agent



FT is an Irish civil and environmental engineering, scientific and planning consultancy. FT is one of Ireland's foremost consultancies in energy development, having been involved in the industry since the late 1990s.



THE PROPOSAL

CONSULTANTS IN ENGINEERING, ENVIRONMENTAL SCIENCE & PLANNING

www.fehilytimoney.ie



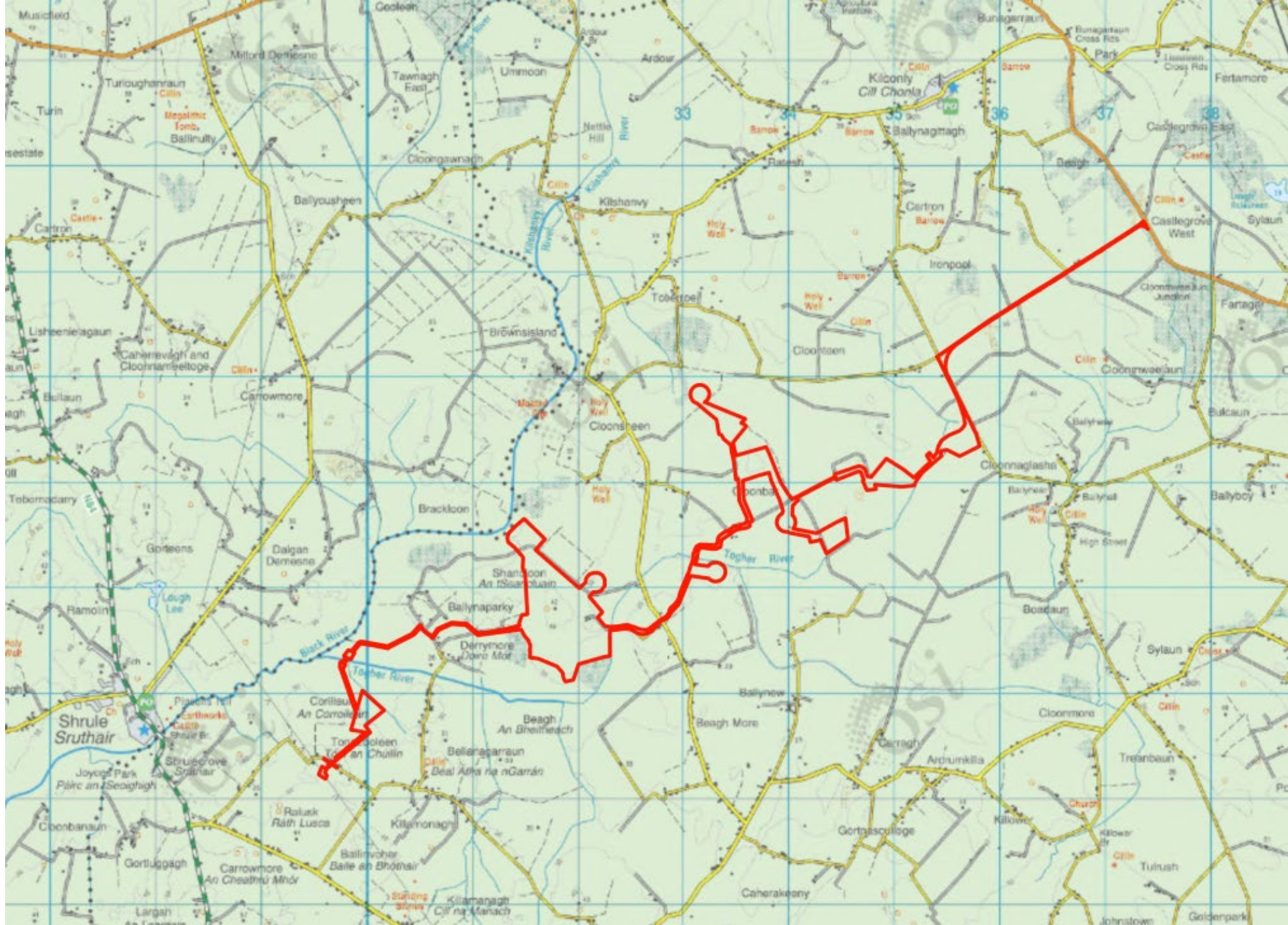
Site Location

- Site is approx. 154 hectares
- Turbine array is located c. 8km north-west of Tuam, and c. 3.5km east of Shrúle.
- Located within the townlands of: Beag More, Cloonbar, Cloonnaglasha, Corillaun, Derrymore, Shancloon, Toberroe and Tonacooleen, Co. Galway.



CONSULTANTS IN ENGINEERING,
ENVIRONMENTAL SCIENCE & PLANNING

www.fehilytimoney.ie



Site Constraints

- Shrule Turlough SAC located approx. 2.5km (at closest point) to the west of the site.
- Lough Corrib SAC runs east to west and is located 1.5km (at closest point) to the south western boundary of the site.
- Black River flows adjacent to the north western to south western boundaries of the site.
- Togher River which flows south west to south east of the site, and its associated tributaries cross through the central portion of the site at intervals.



**CONSULTANTS IN ENGINEERING,
ENVIRONMENTAL SCIENCE & PLANNING**

www.fehilytimoney.ie



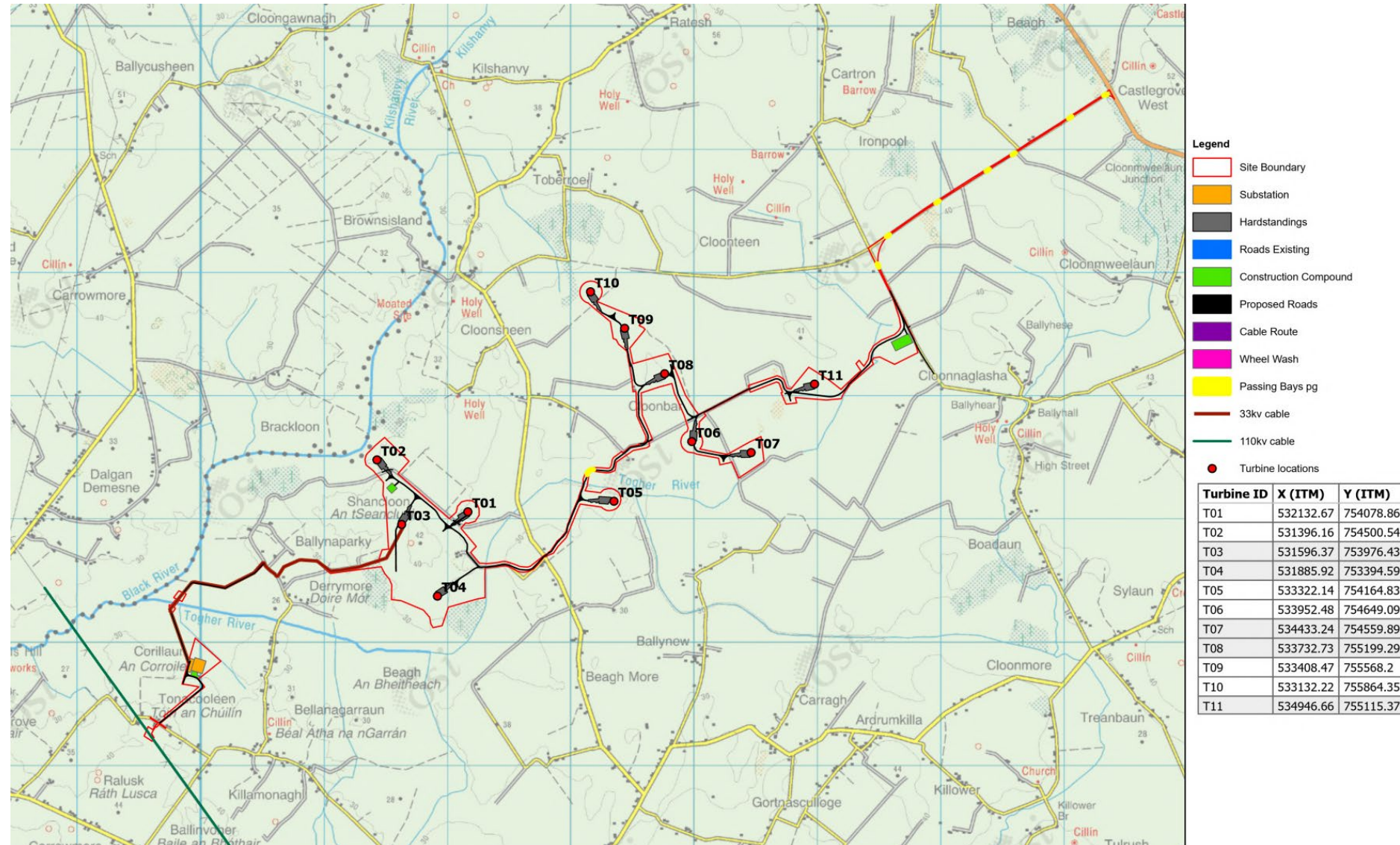
Proposed Site Layout

- Developable area has been influenced by the site constraints.
- Proposed 11 no. turbines.
- Proposed onsite 110kV substation.
- Loop-in connection to the existing Cashla-Dalton 110kV overhead line.



CONSULTANTS IN ENGINEERING,
ENVIRONMENTAL SCIENCE & PLANNING

www.fehilytimoney.ie





RELEVANT LEGISLATION & PLANNING POLICY CONTEXT

CONSULTANTS IN ENGINEERING, ENVIRONMENTAL SCIENCE & PLANNING

www.fehilytimoney.ie

Legislation – 7th Schedule

Under Section 37B of the Planning and Development Act 2000 (as amended), a proposed development must firstly fall within a class specified in the Seventh Schedule. 'Energy Infrastructure' is specified in the Seventh Schedule of the 2006 Act (as amended) which includes:

“An installation for the harnessing of wind power for energy production (a wind farm) with more than 25 turbines or having a total output greater than 50 megawatts.”

- The current project includes 11 no. turbines with individual power outputs of between 5.6 MW to 6.6 MW (giving an MEC range of between 62MW-73MW) and satisfies the 3 no. criterion set out in Section 37A (2) of the Planning and Development Act 2000 (as amended).
- An Bord Pleanála confirmed in writing on 2nd February 2024 that the proposed Wind Farm development constitutes **Strategic Infrastructure Development (SID)**.



CONSULTANTS IN ENGINEERING,
ENVIRONMENTAL SCIENCE & PLANNING

www.fehilytimoney.ie

Legislation – Opinion on Flexibility

The **Planning and Development, Maritime and Valuation (Amendment) Act 2022**, provides for design flex in the case of applications for development specified in the 7th Schedule relating to rapidly changing technology and the potentially long lead-in times between the making of a planning application and the procurement of equipment.

Under Section 37CC (1) of the Planning and Development Act 2000 (as amended), it states that a prospective applicant who proposes to make an application for development specified in the Seventh Schedule may request a meeting with the Board for the purpose of Section 37CD as part of consultation referred to in Section 37B (1).

- Accordingly, RWE Renewables Ireland Limited have commenced this new pre-application consultation **under Section 37B (1)** seeking the Boards opinion on design flexibility.
- Section 37CC (2) of the Act sets out the relevant information which is required to be included within the pre-application request in order to assist the Board in informing their opinion, which was provided to the Board at the time of submission.



CONSULTANTS IN ENGINEERING,
ENVIRONMENTAL SCIENCE & PLANNING

www.fehilytimoney.ie

Wind Turbine Model Options – Design Flex

- A request for flexibility is being sought with regards to the proposed Turbine Dimensions.
- The following table includes the turbine 'options' which the client has selected. The worst case for each element will be assessed through the EIAR.
- It is acknowledged that export capacity is not a physical attribute and is thereby consequent on turbine design. ABP have accepted in other cases that there may be a variation in export capacity arising as a result of differing turbine models.

Option	1 N-149	2 V-150	3 SG155
Hub Height	104.7m	105m	102.5m
Tip Height	179.25m	180m	180m
Rotor Diameter	149.1m	150m	155m
For context only (based on 11 no. turbines):			
Export Capacity per turbine (MW)	5.7MW	5.6MW	6.6MW
Total Site Capacity (MW)	62.7MW	61.6MW	72.6MW



CONSULTANTS IN ENGINEERING,
ENVIRONMENTAL SCIENCE & PLANNING

www.fehilytimoney.ie

Planning Policy Context

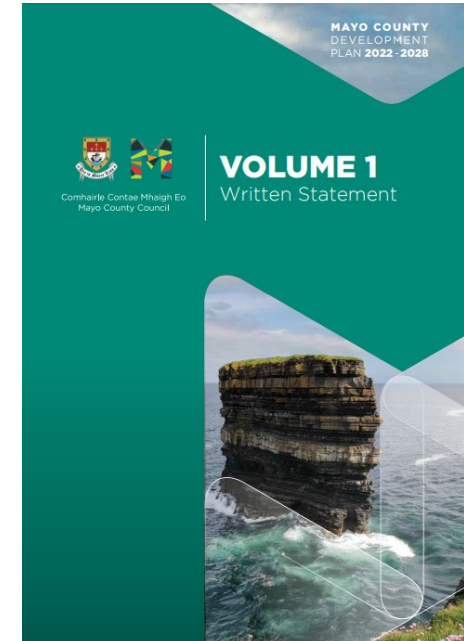
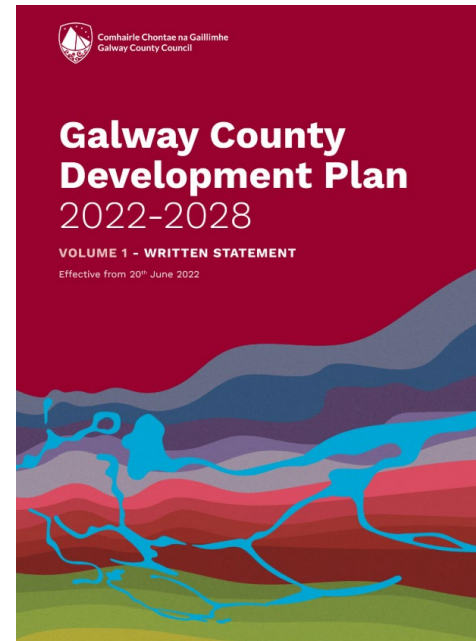
Due to the location of the development site (wholly located within Galway County Council, albeit on the border to Mayo County Council), the following Local Authorities County Development Plans are considered relevant:

- **Galway County Development Plan 2022-2028** – came into effect June 2022.
- **Mayo County Development Plan 2022-2028** – came into effect June 2022.



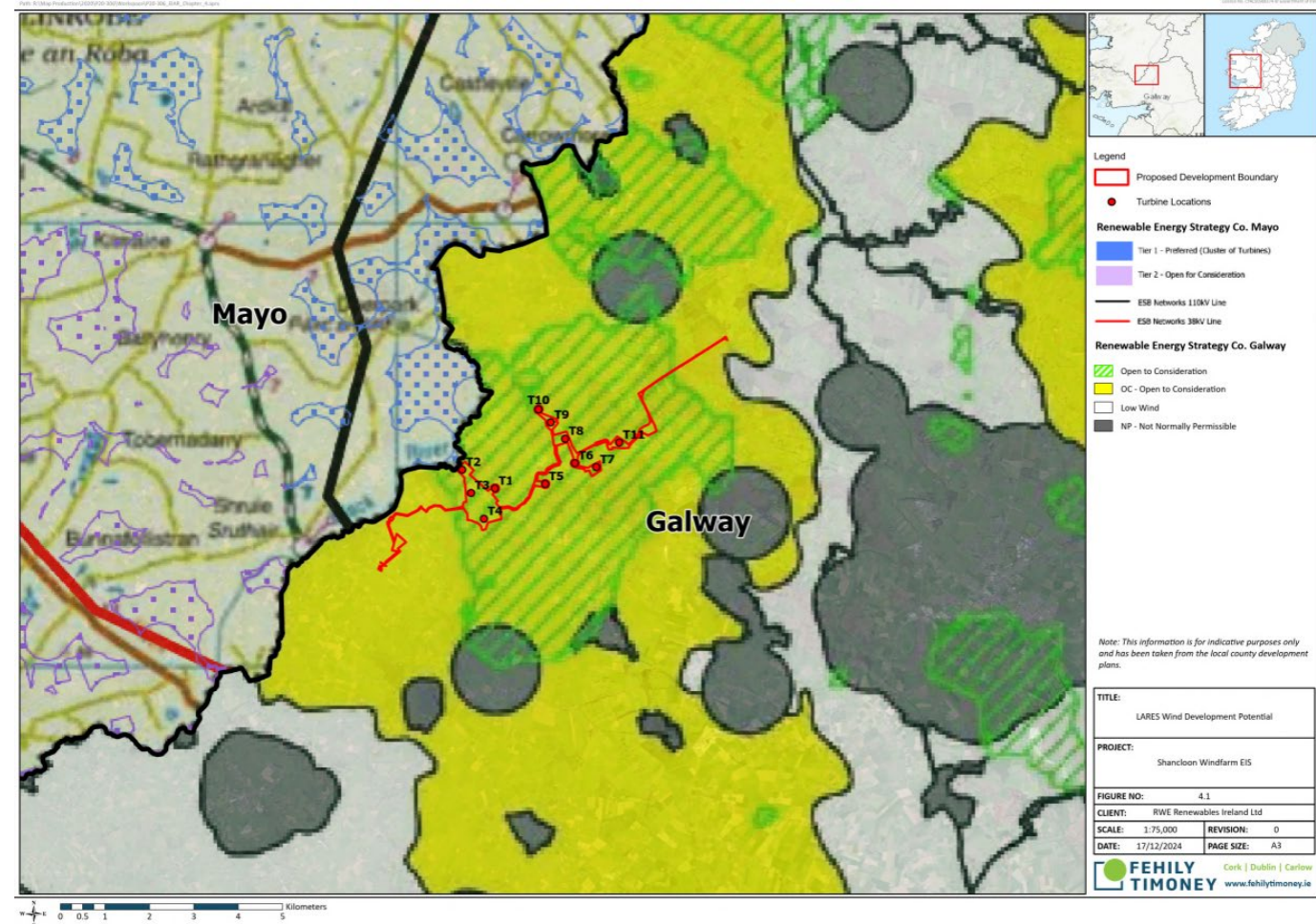
CONSULTANTS IN ENGINEERING,
ENVIRONMENTAL SCIENCE & PLANNING

www.fehilytimoney.ie



Galway County Development Plan 2022-2028

- Policy Objectives **RE1, RE3** and **RE5** support the facilitation of renewable energy developments/ Wind Farms in suitable locations.
- LARES (Appendix 1 of GCDP) identifies the Wind Potential Areas, with the majority of the site falling within ‘*Open to Consideration*’ classification (**All turbines**), with a small portion falling within ‘*Generally to be Discouraged*’ (**substation**).
- Potential Future Capacity within the County for ‘Wind Energy – Terrestrial’ is identified within LARES as 965MW. Existing capacity 570MW.



MAP 8 Renewable Energy Potential and Existing Infrastructure in County Mayo
Renewable Energy Strategy for Co. Mayo 2011-2020

- Tier 1 - Preferred (Large Wind Farms)
- Tier 1 - Preferred (Cluster of Turbines)
- Tier 2 - Open for Consideration

Table 9 Wind Energy Deployment Zones Description

Mapping Key	Meaning [to be read in conjunction with Policies in Section 19]	Method of calculation
Wind Potential		
Open to Consideration	Areas where Wind Energy development is likely to be favourable considered - subject to the results of more detailed assessment of policies and potential effects.	The middling scoring bracket from the combination of wind opportunity and sensitivity weighting scores.
Generally to be Discouraged	Areas where Wind Energy development is unlikely to be favourably considered on account of potential to adversely effect protected landscape, water, ecological resources and residential amenity.	The lowest scoring bracket from the combination of wind opportunity and sensitivity weighting scores.

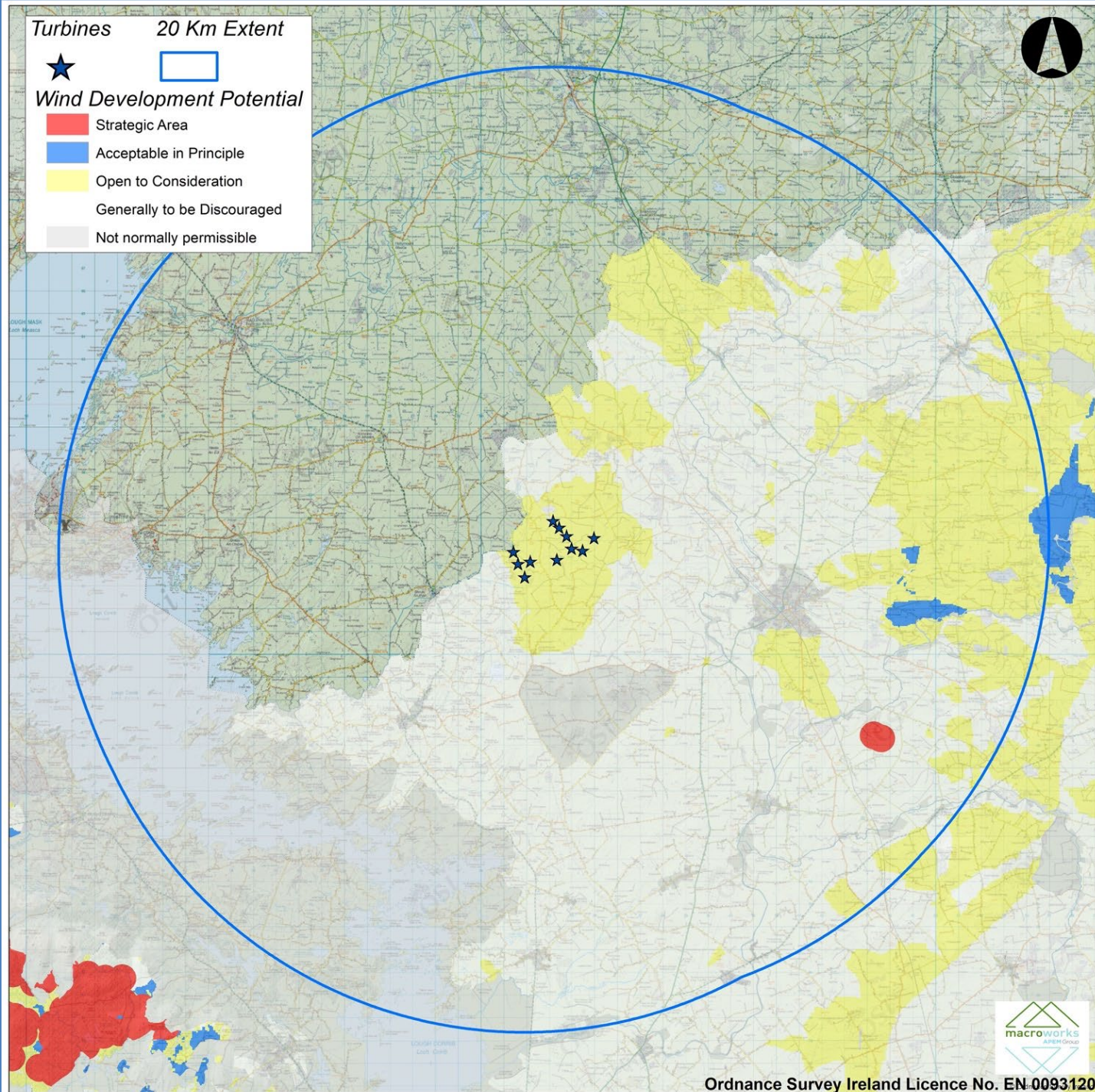
Site Layout Review

- Taking into consideration the GCDP zoning classifications for Wind Energy, we have ensured that the turbines are solely located within the 'Open to Consideration' zoning, with the proposed onsite substation being the only piece of infrastructure falling within the 'Generally to be Discouraged' zoning.



CONSULTANTS IN ENGINEERING,
ENVIRONMENTAL SCIENCE & PLANNING

www.fehilytimoney.ie



Ordnance Survey Ireland Licence No. EN-0093120



TECHNICAL CONSIDERATIONS

CONSULTANTS IN ENGINEERING, ENVIRONMENTAL SCIENCE & PLANNING

www.fehilytimoney.ie

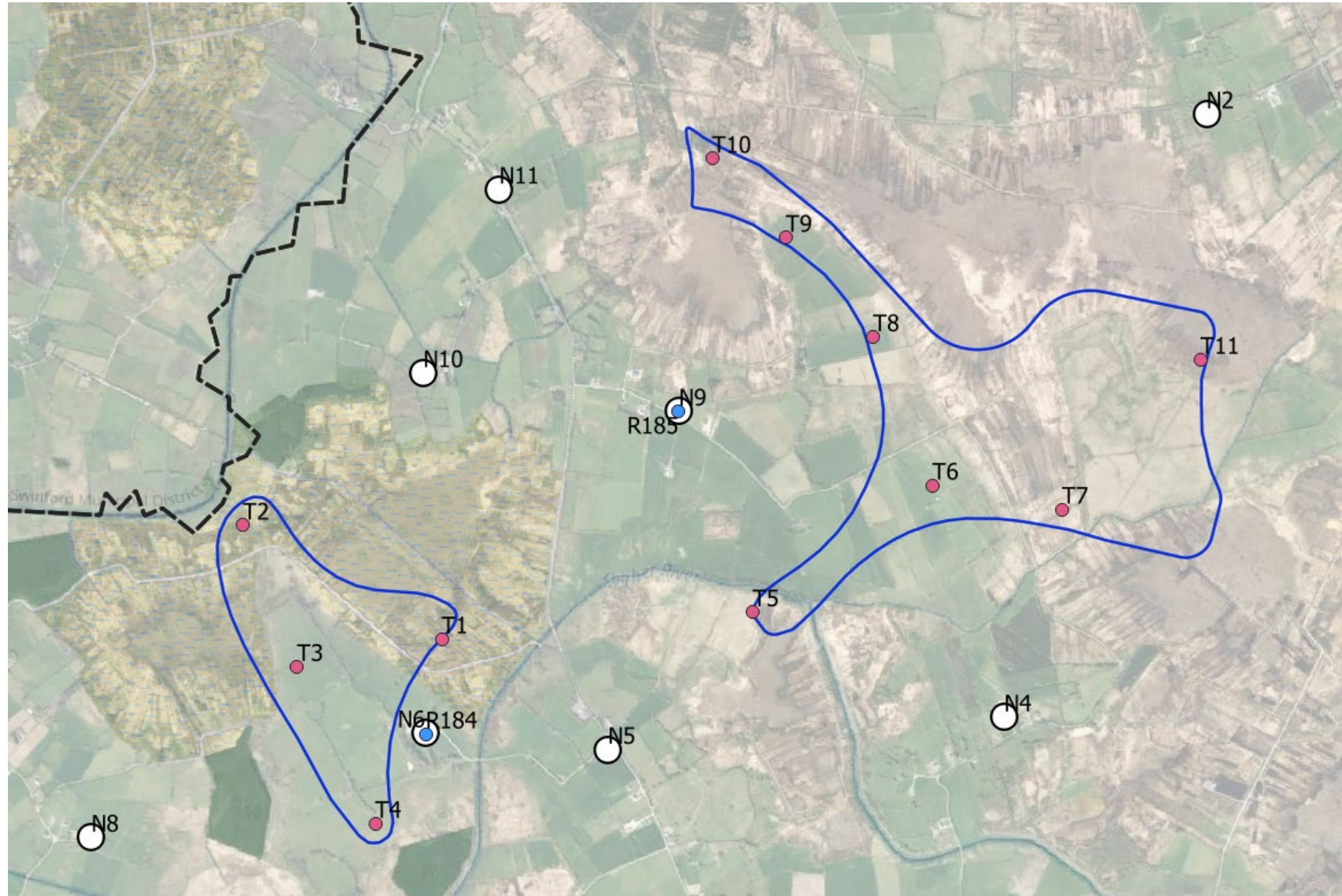
Noise Assessment

- Noise will be assessed through the EIAR based on a worst-case scenario.
- A hub height of 105m has been assessed.
- A limit of 43dB has been assumed or +5dB above background, whichever is greater. And for low noise areas (<30dB) a limit of 40dB L_{A90} has been adopted.
- The noise limit of 40 dB L_{A90} for daytime limit in low noise environments is consistent with limits applied to windfarms in the area, in addition to limits applied by An Bord Pleanála to windfarm developments.



CONSULTANTS IN ENGINEERING,
ENVIRONMENTAL SCIENCE & PLANNING

www.fehilytimoney.ie



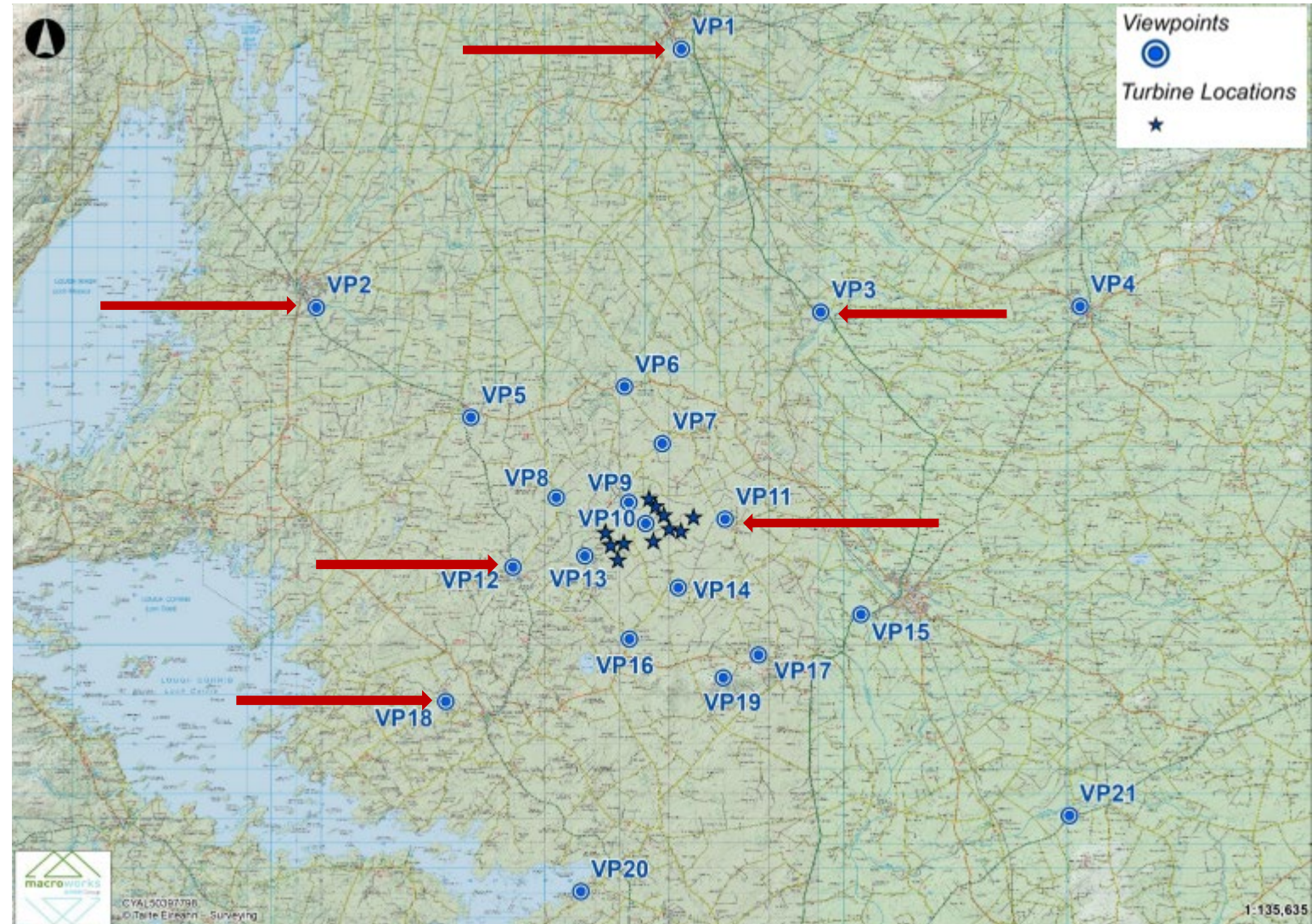
Landscape and Visual Assessment

- Macroworks are the appointed consultant undertaking the LVIA. A total of 21 no. VP's have been identified, as shown on the map, and photomontages for each have been prepared.
- We have selected 6 no. viewpoints – VP1, VP2, VP3, VP11, VP12, & VP18.
- The LVIA assessment has been based on the following turbine specifications – rotor diameter of 155m, and tip height of 180m.
- Due to the gently rolling landscape of the study area there will be limited locations with sufficient elevation to have visibility of the turbines above hedgerows and treelines.
- There are 3 no. designated views within the study area, 2 no. of which have no potential views of the proposed development. Designated View No.33 within the GCDP is not orientated towards the site, however VP18 has been selected from the same location looking towards the site. The overall significance of visual impact at VP18 is deemed slight.



CONSULTANTS IN ENGINEERING,
ENVIRONMENTAL SCIENCE & PLANNING

www.fehilytimoney.ie



Baseline Photograph

This image provides landscape and visual context only

Part 1 of 1



Photomontage

Part 1 of 1



Photomontage

Part 1 of 1



Shancloon Wind Farm - Landscape and Visual Impact Assessment

Local road, Cloonnaglasha

Viewpoint Ref: VP11

Photomontage

Part 1 of 1





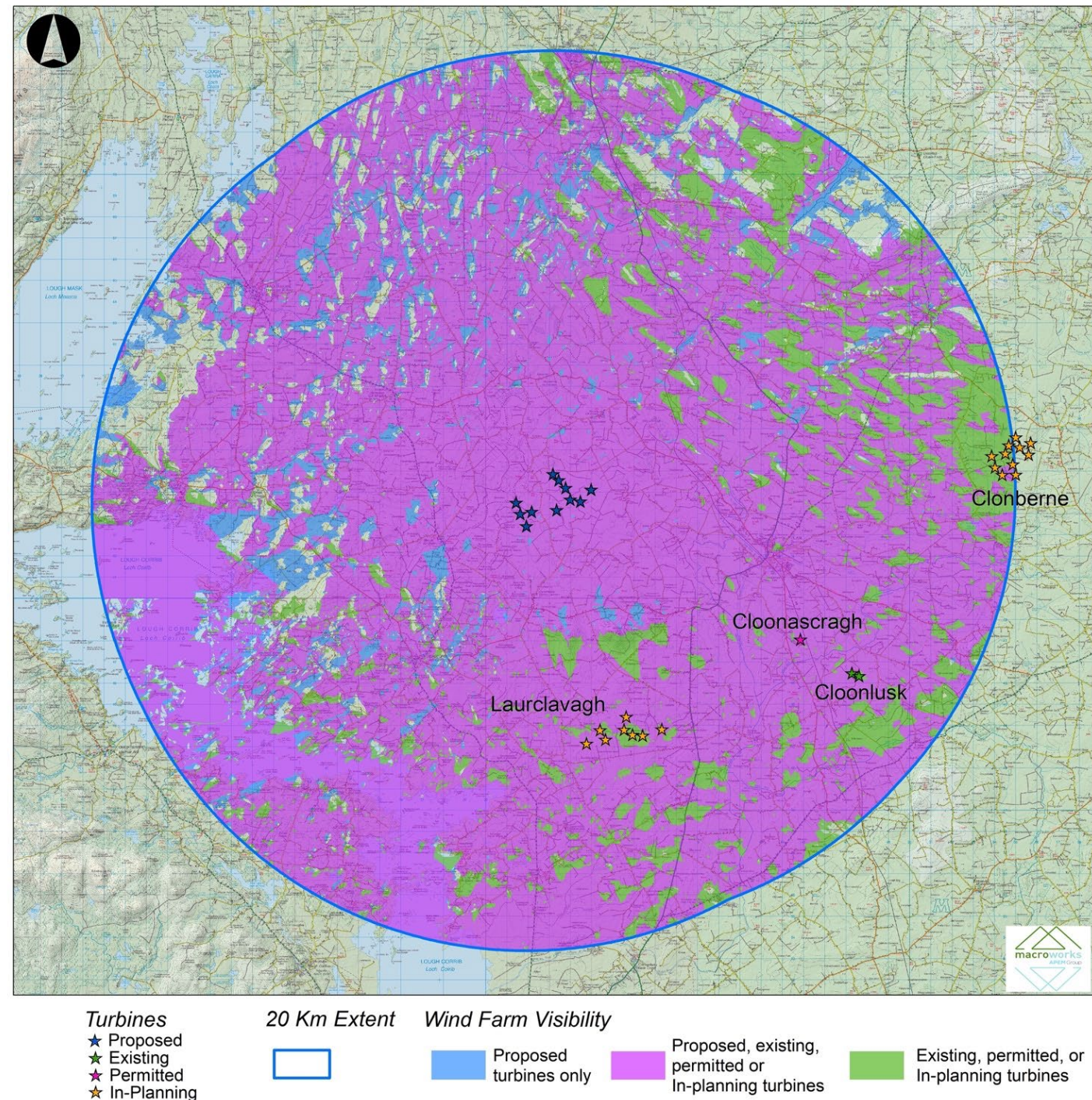
Cumulative Assessment

- The wind farm will be cumulatively assessed against surrounding developments within a 20km radius, which have been recently submitted, approved, currently being built, or operational.
- At present, there is 1 no. existing wind farm (Clonlusk) within the Study Area, 1 no. permitted single turbine (Cloonascragh) and 2 no. in-planning wind energy developments (Laurclavagh & Clonberne).



CONSULTANTS IN ENGINEERING,
ENVIRONMENTAL SCIENCE & PLANNING

www.fehilytimoney.ie



Turbines
★ Proposed
★ Existing
★ Permitted
★ In-Planning

20 Km Extent
[Blue Circle]

Wind Farm Visibility
[Blue Box] Proposed turbines only

[Magenta Box] Proposed, existing, permitted or In-planning turbines

[Green Box] Existing, permitted, or In-planning turbines



QUESTIONS FOR THE BOARD

CONSULTANTS IN ENGINEERING, ENVIRONMENTAL SCIENCE & PLANNING

www.fehilytimoney.ie

Questions for the Board

1. The previous SID Pre-application was formally closed out in February 2024. However, we note that there are 2 no. ABP case references associated with the 16th December 2024 submission - **ABP-321507-24 (Pre-App Consultation)** & **ABP-321495-24 (Private Flexibility Opinion)**. Can we expect to receive a further confirmation from the Board that the proposal constitutes SID?
2. How many hard copies of the application submission will ABP require, would 2 no. copies suffice? as this would be in line with FT sustainability objectives.





NEXT STEPS?

CONSULTANTS IN ENGINEERING, ENVIRONMENTAL SCIENCE & PLANNING

www.fehilytimoney.ie

